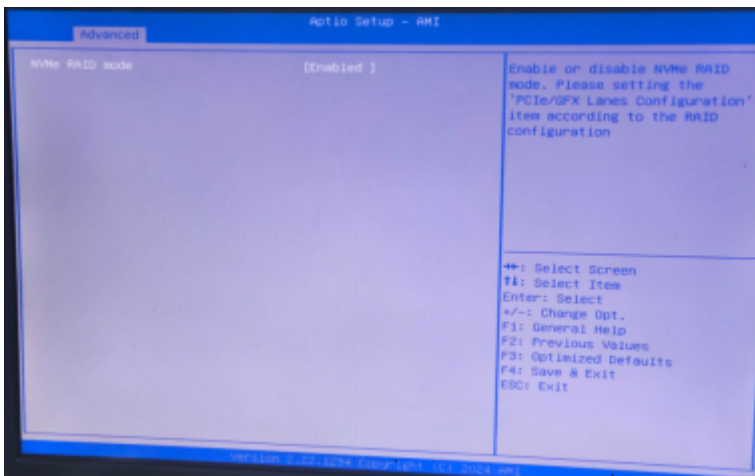


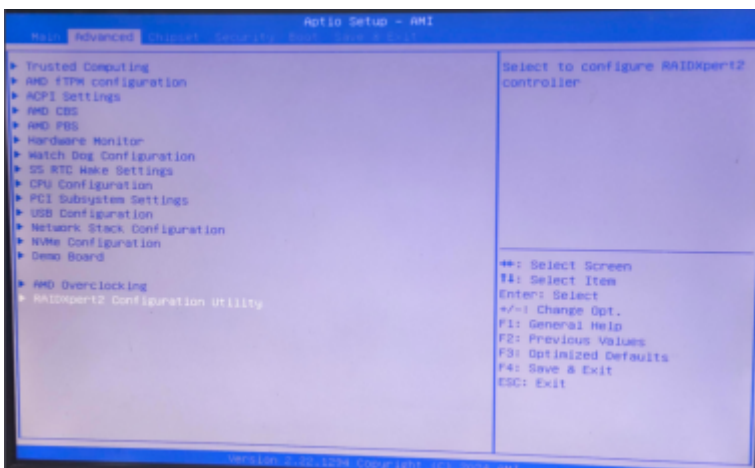
SER9MAX ? RAID ??

SER9MAX ? RAID ??

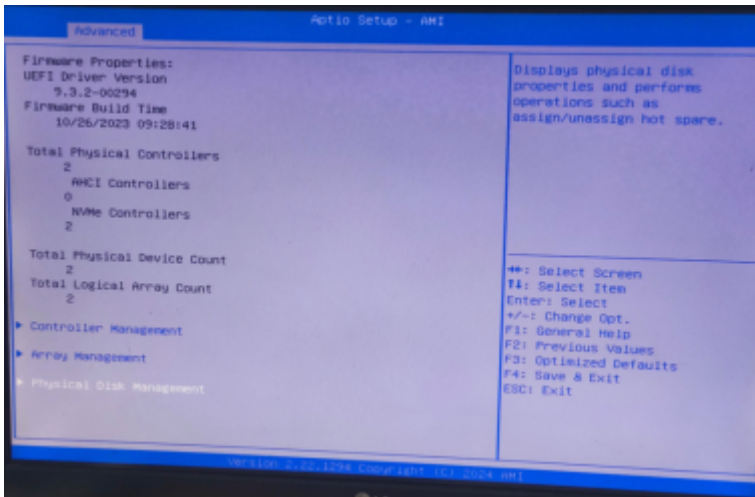
1. ?????? Del ???BIOS
2. ???????? Advanced-Feature-NVMe RAID mode ??????Enable



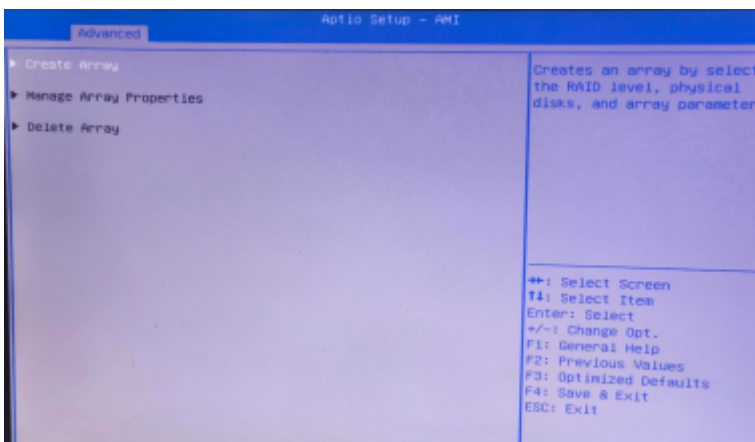
3. RAIDXpert2 Configuration Utility



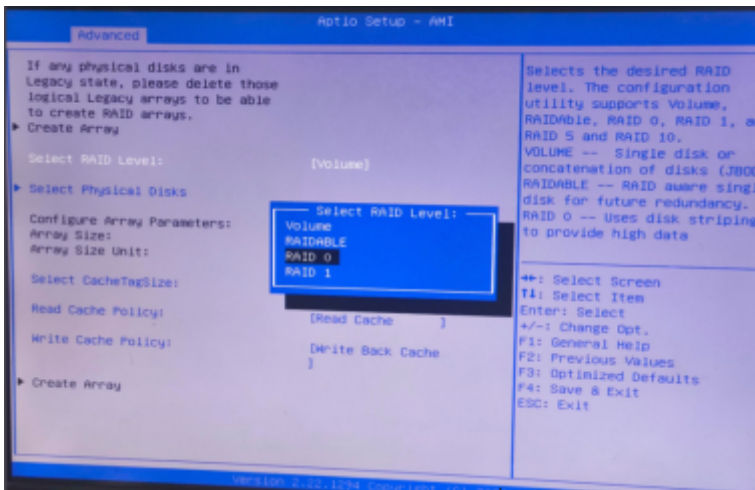
4. RAIDXpert2 Configuration Utility - Array management



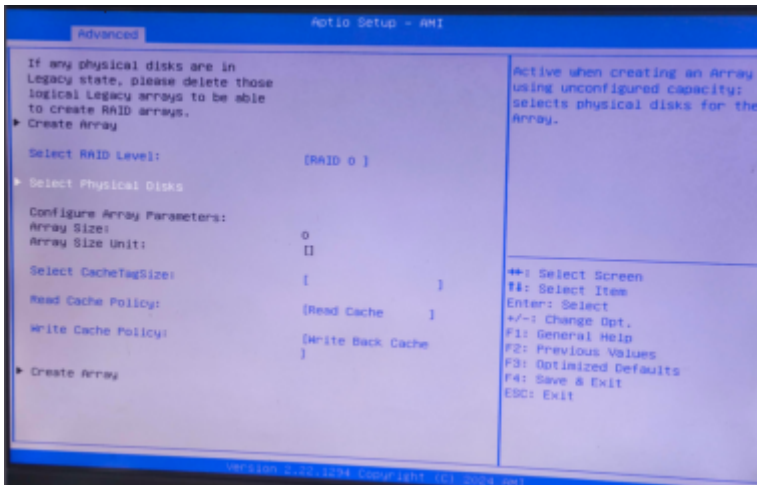
5. RAIDXpert2 Configuration Utility - Array management - Create Array



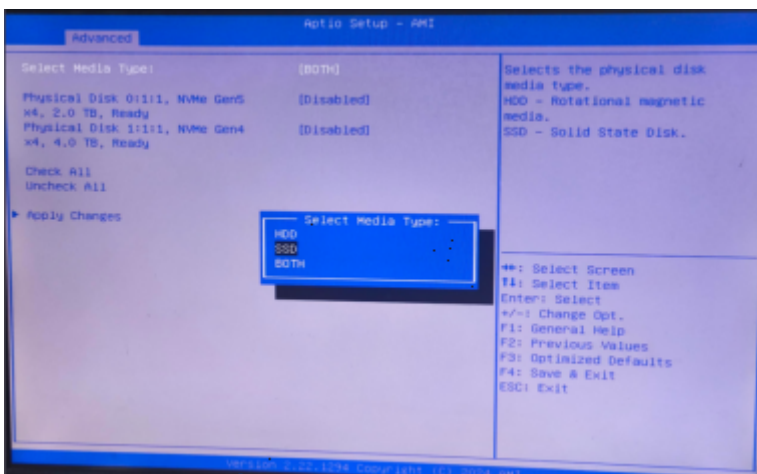
6. RAIDXpert2 Configuration Utility - Array management - Create Array - Select RAID Level



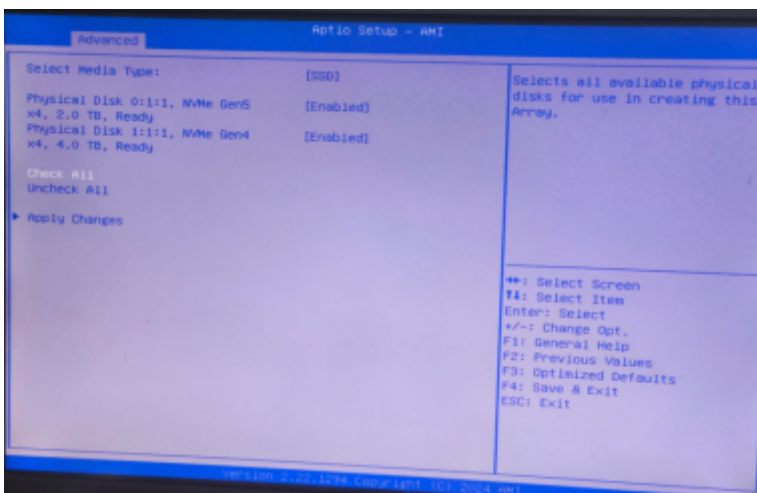
7. Select Physical Disks



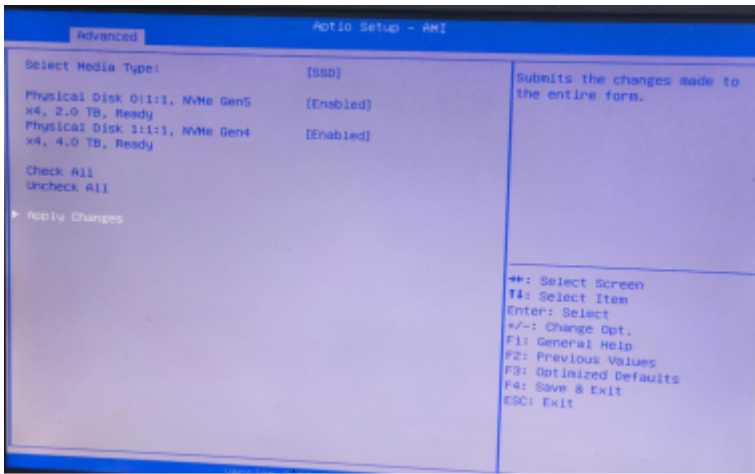
8. Select Media Type



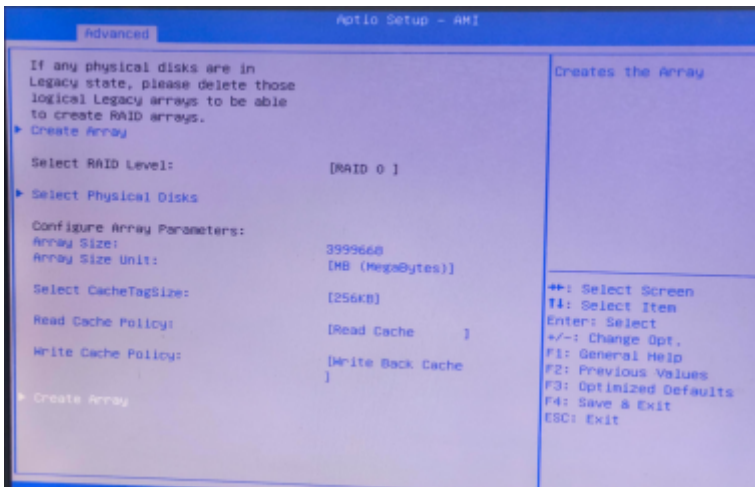
9. Check All???????Enable



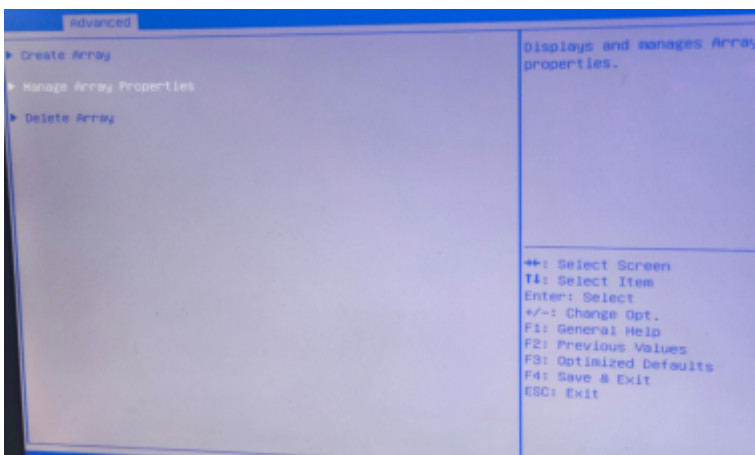
10. Apply Changes



11. Create Array



12. ?? Manage Array Properties



13. Select Array ?????RAID????

