

????????

????????

????????

?????(AC Power Auto Recovery)????????????????????????????????BIOS????????????????

- ???/????24????????
- ????????
- ??????
- ??????

?? ???????

1. ???UPS????????????????
2. ?????????????????
3. ?????????????

????????????????

1?? ??BIOS????

1. ????????
2. ???????
3. ??????Del????2-3??



? ??????????F2?F10?Esc?????????????

2?? ????????

[BIOS?????]

Main → Chipset → PCH-I/O Configuration → State After G3

Aptio Setup - AMI

MainAdvancedChipsetSecurityBootSave & Exit

▶ System Agent (SA) Configuration

▶ PCH-I/O Configuration

PCH Parameters

→+: Select Screen

↑↓: Select Item

Enter: Select

+/-: Change Opt.

F1: General Help

F2: Previous Values

F3: Optimized Defaults

F4: Save & Exit

ESC: Exit

Version 2.22.1288 Copyright (C) 2023 AMI

Aptio Setup - AMI

Chipset

PCH-I/O Configuration

▶ PCI Express Configuration

▶ SATA Configuration

▶ USB Configuration

▶ Security Configuration

▶ HD Audio Configuration

State After G3

[S5 State]

Specify what state to go to when power is re-applied after a power failure (G3 state).

→+: Select Screen

↑↓: Select Item

Enter: Select

+/-: Change Opt.

F1: General Help

F2: Previous Values

F3: Optimized Defaults

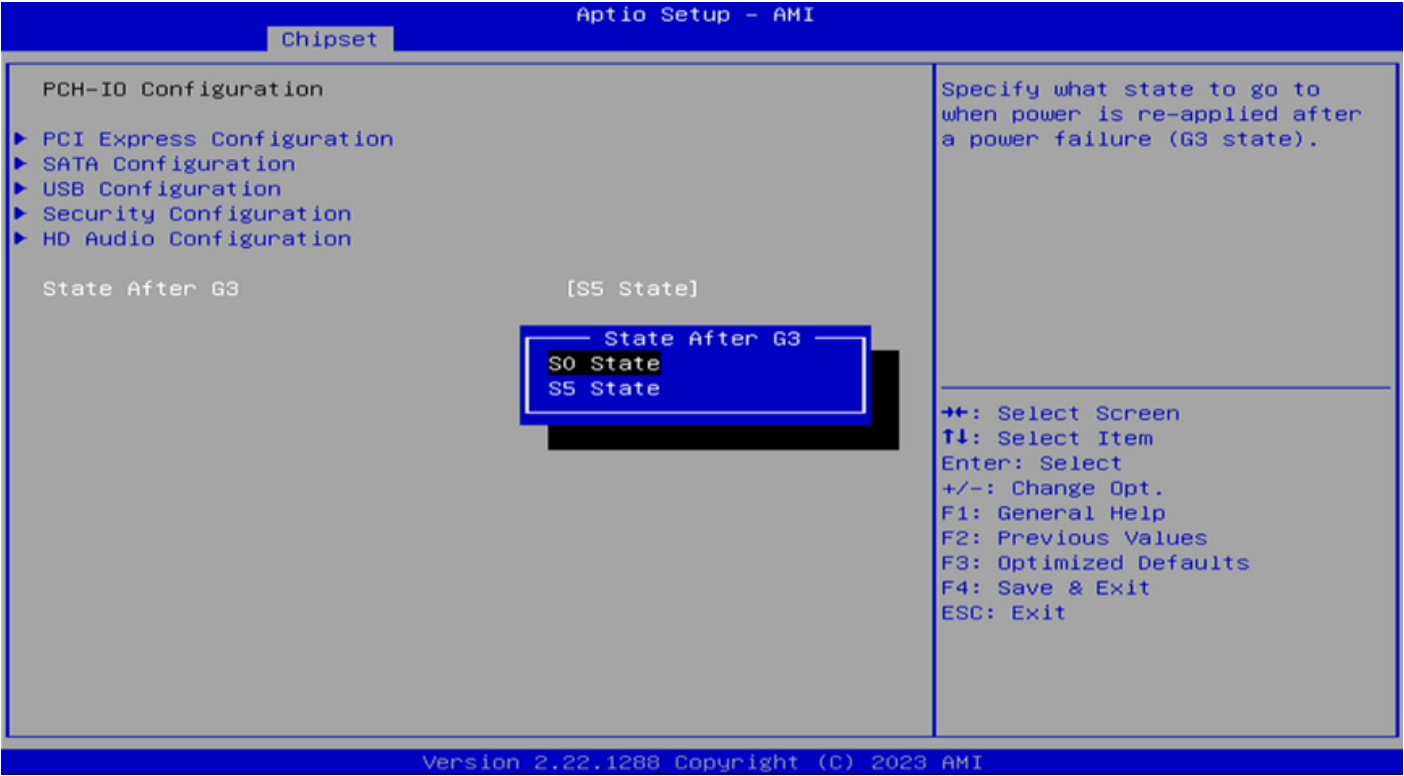
F4: Save & Exit

ESC: Exit

Version 2.22.1288 Copyright (C) 2023 AMI

3?? ??????

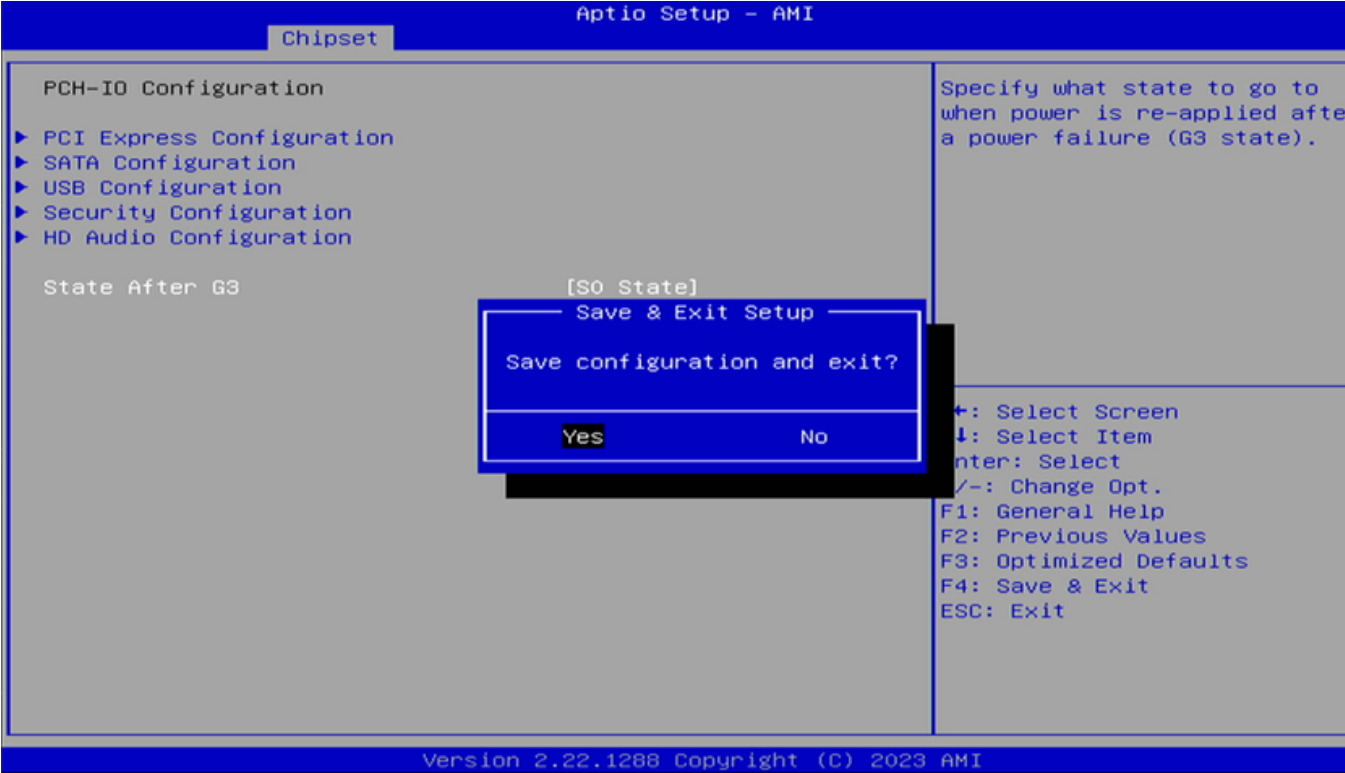
???	????	????
S0 State	??????	???/????????
S5 State	??????	??????????



4?? ?????

- 1. ? F4 ????????
- 2. ?? Yes ??

3. ???????



????????

? ?????

- 1. ?????????
- 2. ????????10?
- 3. ??????
- 4. ????????

?? ???????

????	????	????
????BIOS	??????	?????????LOGO??????????
?????	BIOS????	?????"AC Recovery"?"Power Loss"
?????	CMOS????	??????

????????????????????????????????IT?????